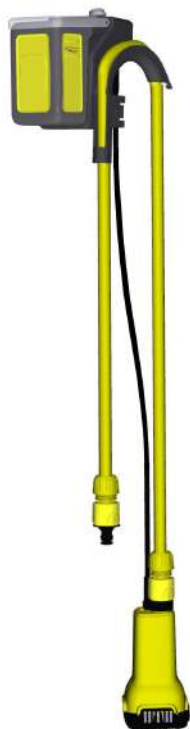


## BP 2.000-18 Barrel



|             |     |
|-------------|-----|
| Deutsch     | 5   |
| English     | 9   |
| Français    | 13  |
| Italiano    | 17  |
| Nederlands  | 21  |
| Español     | 25  |
| Português   | 29  |
| Dansk       | 33  |
| Norsk       | 36  |
| Svenska     | 40  |
| Suomi       | 44  |
| Ελληνικά    | 47  |
| Türkçe      | 52  |
| Русский     | 55  |
| Magyar      | 60  |
| Čeština     | 64  |
| Slovenščina | 68  |
| Polski      | 71  |
| Românește   | 75  |
| Slovenčina  | 79  |
| Hrvatski    | 83  |
| Српски      | 87  |
| Български   | 91  |
| Eesti       | 95  |
| Latviešu    | 99  |
| Lietuviškai | 102 |
| Українська  | 106 |
| Қазақша     | 110 |
| 日本語         | 115 |
| العربية     | 119 |



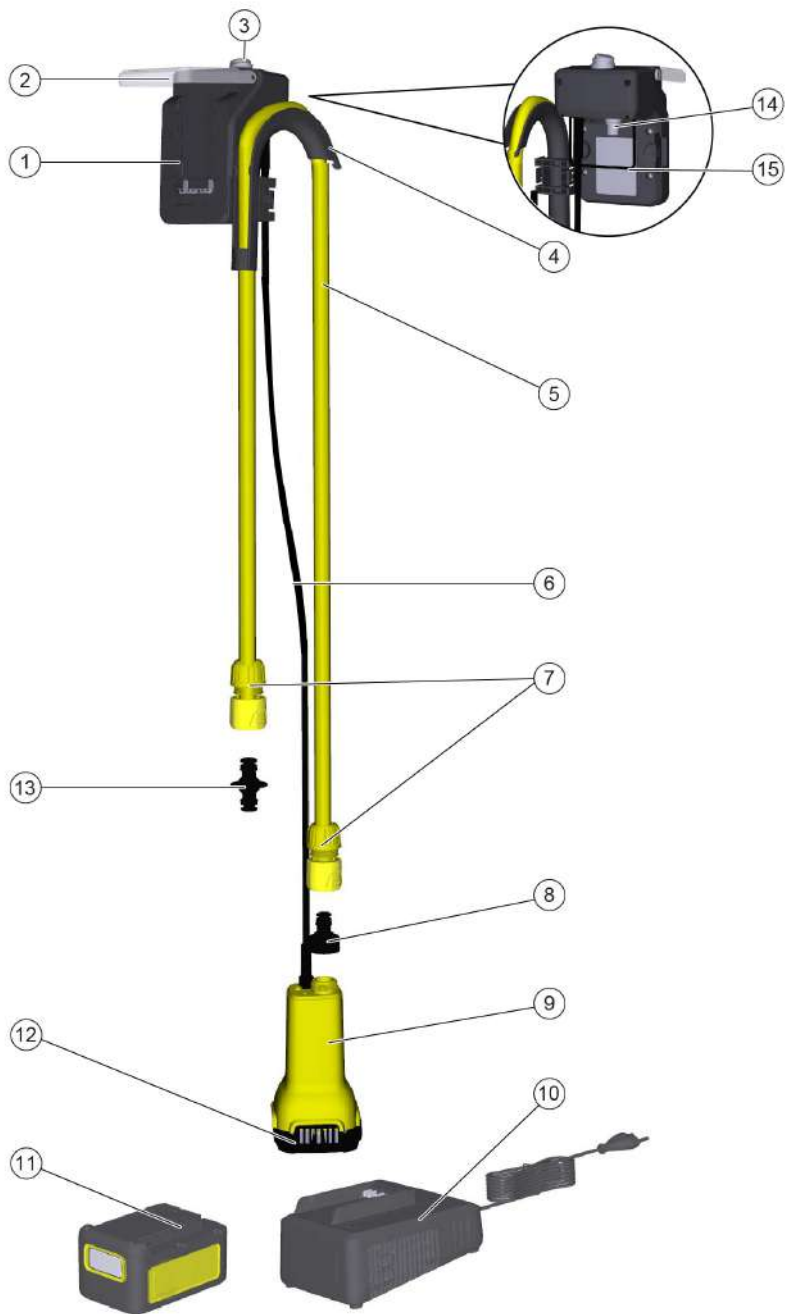
Register  
your product  
[www.kärcher.com/welcome](http://www.kärcher.com/welcome)

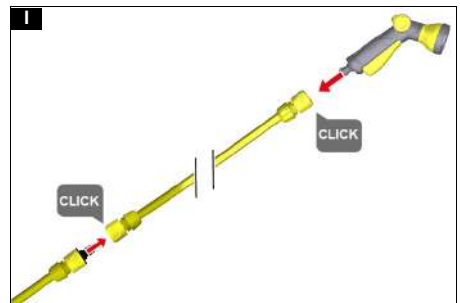
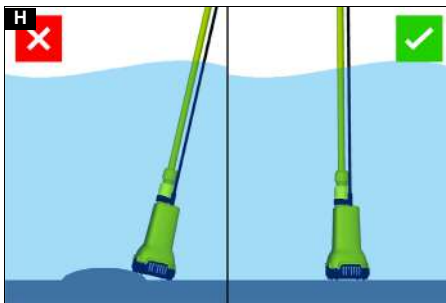
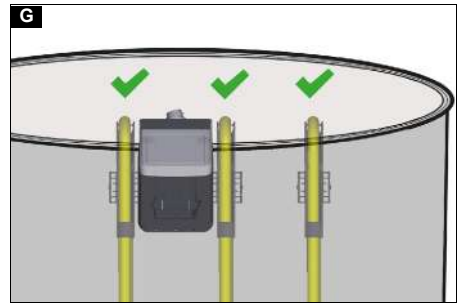
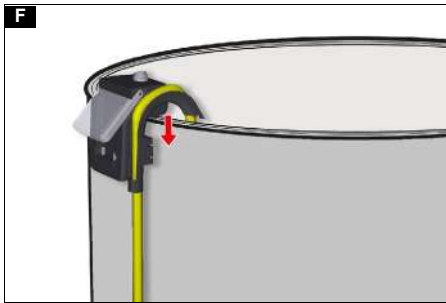
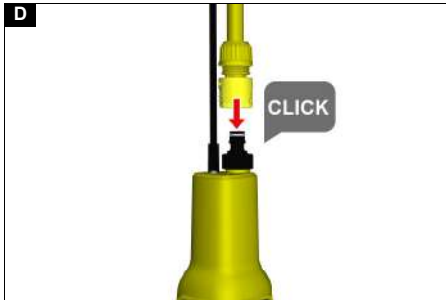
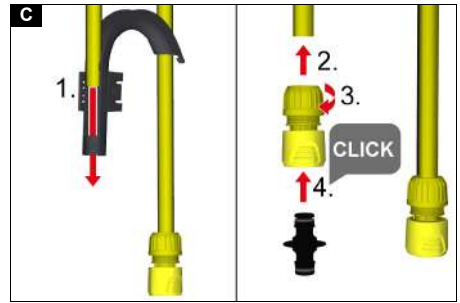
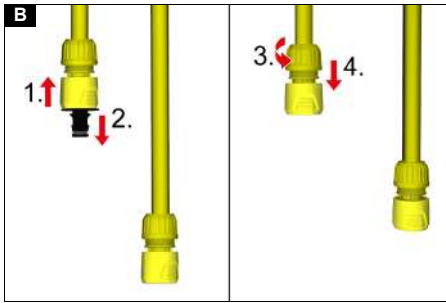


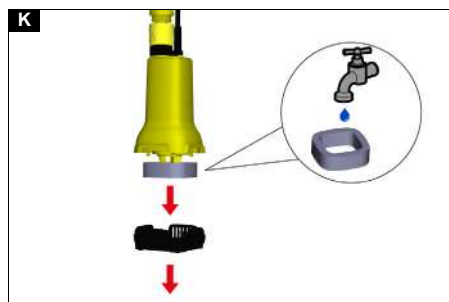
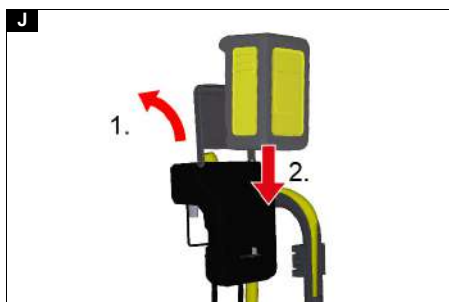
# EAC



59698830 (01/22)

**A**







## Contents

|                                    |    |
|------------------------------------|----|
| General instructions .....         | 9  |
| Safety instructions Pump .....     | 9  |
| Safety devices .....               | 9  |
| Intended use .....                 | 9  |
| Environmental protection .....     | 10 |
| Accessories and spare parts .....  | 10 |
| Scope of delivery .....            | 10 |
| Warranty .....                     | 10 |
| Description of the unit .....      | 10 |
| Initial startup .....              | 10 |
| Operation .....                    | 11 |
| Transport .....                    | 11 |
| Storage .....                      | 11 |
| Care and service .....             | 11 |
| Troubleshooting guide .....        | 11 |
| Technical data .....               | 12 |
| EU Declaration of Conformity ..... | 12 |

## General instructions

  Read these original instructions and the safety instructions of the battery pack before using the unit for the first time. Act in accordance with them. Keep both books for future reference or for future owners.

## Safety instructions Pump

Read these safety instructions and the original instructions before using the device for the first time. Act in accordance with them. Keep the two booklets for future reference or for future owners.

- In addition to the notes in the operating instructions, you also need to take into consideration the general safety regulations and accident prevention guidelines applicable by law.
- Warnings and information notices attached to the device provide important information for hazard-free operation.

### Hazard levels

#### **DANGER**

- Indication of an imminent threat of danger that will lead to severe injuries or even death.

#### **WARNING**

- Indication of a potentially dangerous situation that may lead to severe injuries or even death.

#### **CAUTION**

- Indication of a potentially dangerous situation that may lead to minor injuries.

#### **ATTENTION**

- Indication of a potentially dangerous situation that may lead to damage to property.

### General safety instructions

#### **DANGER**

- Risk of asphyxiation. Keep packaging film out of the reach of children.


#### **WARNING**

- Persons with reduced physical, sensory or mental capabilities, or those with a lack of experience and knowledge, are only allowed to use the appliance if they are supervised or have been instructed with re-

spect to using the appliance safely, and understand the resultant dangers involved.

- Children must be supervised to prevent them from playing with the appliance.
- Children from the age of 8 may use the appliance if they are supervised or have been instructed in its use by a person responsible for their safety, and if they have understood the resultant dangers involved.
- Children may only perform cleaning work and user maintenance under supervision.

### Risk of electric shock


 **DANGER** • Install electrical plug connections only in areas that are protected against flooding. • You may not operate the pump when persons are in the swimming pool or garden pond.

**ATTENTION** • Do not operate the device continuously in the rain or under wet weather conditions. • Ensure that the unit is stable and protected against floods.

### Operation


 **DANGER** • Risk of explosion


- Do not pump corrosive, highly flammable or explosive liquids, e.g. petroleum, petrol, acids or nitro thinner.
- Do not operate the unit in a flammable or explosive environment

 **CAUTION** • Accidents or damage due to the device falling over. Before all actions with or on the device, you must make sure that it is stable. • Water that has been pumped with this unit is not drinking water.


**ATTENTION** • Do not convey fats, oils and salt water. • Do not pump waste water from sanitary facilities or muddy water with a lower flowing ability than clear water. • Do not pump water that has a temperature higher than 35°C.

### Care and maintenance

 **WARNING** • Switch off the unit and remove the battery pack before performing any care and maintenance work.

 **CAUTION** • Have repair work, installation of spare parts and work on electrical components carried out by the authorised customer service only.

### Transport

 **CAUTION** • Accidents or damage due to the device falling over. Before all actions with or on the device, you must make sure that it is stable. • Risk of accidents and injuries. Take into account the weight of the device for transportation and storage. See chapter Technical data in the operating instructions.

## Safety devices

#### **CAUTION**

**Missing or modified safety devices**  
Safety devices are provided for your own protection. Never modify or bypass safety devices.

## Intended use

This unit has been developed for private use and is not intended for the load imposed by commercial use. The manufacturer accepts no liability for possible damage caused by improper use or incorrect operation.

The unit is primarily intended for the extraction of rain water from collection containers provided for this purpose.

#### Permissible feed fluids

- Water with a degree of contamination up to grain size 0.5 mm.
- Swimming pool water (provided the additives are dosed as intended).
- Washing lye.

The temperature of the delivered liquid must not exceed 35 °C.

#### Note

*The unit must not run dry for more than 20 minutes.*

*There is no dry run fuse.*

### Environmental protection



The packing materials can be recycled. Please dispose of packaging in accordance with the environmental regulations.



Electrical and electronic appliances contain valuable, recyclable materials and often components such as batteries, rechargeable batteries or oil, which - if handled or disposed of incorrectly - can pose a potential threat to human health and the environment. However, these components are required for the correct operation of the appliance. Appliances marked by this symbol are not allowed to be disposed of together with the household rubbish.

#### Notes on the content materials (REACH)

Current information on content materials can be found at: [www.kaercher.com/REACH](http://www.kaercher.com/REACH)

### Accessories and spare parts

Only use original accessories and original spare parts. They ensure that the appliance will run fault-free and safely.

Information on accessories and spare parts can be found at [www.kaercher.com](http://www.kaercher.com) and at the end of this manual.

### Scope of delivery

The scope of delivery for the appliance is shown on the packaging. Check the contents for completeness when unpacking. If any accessories are missing or in the event of any shipping damage, please notify your dealer.

### Warranty

The warranty conditions issued by our relevant sales company apply in all countries. We shall remedy possible malfunctions on your appliance within the warranty period free of cost, provided that a material or manufacturing defect is the cause. In a warranty case, please contact your dealer (with the purchase receipt) or the next authorised customer service site. (See overleaf for the address)

### Description of the unit

The maximum amount of equipment is described in these operating instructions. Depending on the model used, there are differences in the scope of delivery (see packaging).

For the illustrations, refer to the graphics page **Illustration A**

- ① Main module and battery holder
- ② Protective cover (battery pack)

- ③ Trigger On/Off
- ④ Hose guide
- ⑤ Connection hose 1/2"
- ⑥ Connection cable main module / pump
- ⑦ Hose coupling 1/2" - 5/8
- ⑧ Tap connector G<sup>3</sup>/<sub>4</sub>" (26.5 mm)
- ⑨ Pump
- ⑩ \*Quick Charger Battery Power 18V
- ⑪ \*Battery Pack Battery Power 18V
- ⑫ filter
- ⑬ Hose connections
- ⑭ Overload protection switch
- ⑮ Retainer

\*Not included in the scope of delivery.

### Rechargeable battery pack

The device can be operated with a 18 V Kärcher Battery Power battery pack.

### Initial startup

#### Installing the hose

1. Remove the hose connector and hose coupling at one end of the hose.

##### Illustration B

2. Guide the hose through the hose guide.

##### Illustration C

3. Reinstall the hose coupling and hose connector.

##### Illustration C

4. Connect the hose to the pumps.

##### Illustration D

#### Attach the drum edge bracket with battery mount

1. If necessary, mount the hose guide on the drum edge bracket.

##### Illustration E

#### Note

*There are 3 positions of the hose guide to choose from:*

- 1 *Installation on the left of the drum edge bracket.*
- 2 *Installation on the right of the drum edge bracket.*
- 3 *Loose installation on the edge of the bracket.*

##### Illustration G

2. Slide the drum edge bracket onto the rim of the container until a secure fit is ensured.

##### Illustration F

#### Note

*The drum edge bracket should not be attached higher than one metre above the ground.*

#### Note

*Do not immerse the drum edge bracket in water.*

3. Place the pump securely on a solid base of the water container.

##### Illustration H

#### Note

*The suction area must not be blocked by contamination.*

## Connecting the extension hose / accessories

1. Connect the extension hose with special accessories (not included in scope of delivery) to the hose coupling.

### Illustration I

## Installing the battery pack

1. Open the protective bonnet upwards.
2. Push the battery pack into the mounting in the device until it audibly latches into place.

### Illustration J

3. Close the protective bonnet.

## Operation

### Operation

## ⚠ DANGER

### **Danger of death from electric shock.**

*Danger of death from electric shock if live parts or the feed fluids are touched.*

*Do not touch any live parts or the feed fluid.*

### Note

*For the pump to suction independently, it must be at least 3 cm in the liquid.*

*If the requirements for the pumping process (water level position / level switch) are guaranteed, the pump starts immediately after inserting the battery pack.*

1. Press the unit trigger.
2. Pump switches on.

## Ending operation

### Note

*Internal soiling can accumulate as deposits and lead to malfunctions.*

1. Flush the pump with clear water after each use.  
This is especially true after transporting chlorinated water or other liquids that leave residues.
2. Switch off the pump by pressing the trigger.
3. Remove the battery pack.

## Transport

## ⚠ WARNING

*Switch the device off, allow it to cool down and remove the battery pack before storage or transportation.*

- Carry the device.

## ATTENTION

### **Loose cable and hoses lying on the ground**

*Danger of tripping*

*Watch out the cables and hoses when relocating the device in mobile operation.*

- Transport the device in a vehicle.
  - a Secure the device against slipping and tipping over.

## Storage

## ATTENTION

### **Danger of frost**

*Incompletely emptied devices can be destroyed by frost.*

*Completely empty the device and accessories. Protect the device from frost.*

## Care and service

The device is maintenance-free, i.e. you do not need to perform periodic maintenance work.

## Flushing the pump

1. Flush the pump with clear water if water with additives has been delivered.

## Cleaning the pre-filter

Check the pre-filter for contamination and clean if necessary.

### Illustration K

1. Remove the pre-filter.
2. Clean the pre-filter under running water.
3. If necessary, flush any dirt residues out of the pump.

## ATTENTION

### **Use of unsuitable lubricant**

*Damage to the seals*

*Use the grease (6.288-143.0) available from Kärcher Service.*

*Use only grease free of mineral oil for the seals.*

4. Lubricate the seals if the connections do not move freely.
5. Fit the pre-filter into the filling nozzle without using unnecessary force. Ensure the correct installation position (cutouts).

## Troubleshooting guide

Malfunctions often have simple causes that you can remedy yourself using the following overview. When in doubt, or in the case of malfunctions not mentioned here, please contact your authorised Customer Service.

### **Pump is running, but not delivering**

*Dirt particles block the suction area.*

1. Clean the suction area.

*Air in the pump*

1. Switch the pump switch on and off several times until liquid is sucked in.

*(Only for manual operation) water table level below minimum level*

1. If possible, immerse pump deeper in feed fluids.

*Compressed air hose blocked*

1. Clean the compressed air hose.

### **The pump does not start up or stops suddenly during operation.**

*Power supply interrupted*

1. Check whether the battery is correctly inserted.

*Battery can no longer be charged*

1. Battery must be replaced with a new one.

*Thermal protection switch in the motor has switched off the pump due to overheating of the motor.*

1. Let the pump cool down, clean the suction area, prevent dry running.

*Remove any dirt particles trapped in the suction area.*

1. Clean the suction area.

### **Battery does not charge**

*Charger or mains cable not connected correctly*

1. Check for correct connection between battery and charger.

2. Check the connection of the mains cable to the socket.

*The battery can no longer be charged.*

1. Battery must be replaced with a new one.

### **Pump capacity decreases**

*Suction area clogged*

1. Clean the suction area.

### **Pumping capacity too low**

The pump capacity of the pump depends on the lifting height, hose diameter and hose length.

1. Observe max. lifting height, see technical data, if necessary select other hose diameter or other hose length.

**The circuit breaker of the HP pump has triggered**

The current of the pump was too high.

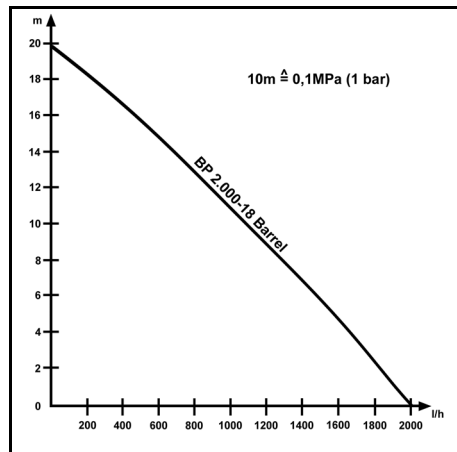
1. Push the button on the back of the edge bracket holder of the circuit breaker back in so that the circuit breaker is reset.
2. Pump can be started again.

**Technical data**

|   |              |                                   |
|---|--------------|-----------------------------------|
|   |              | <b>BP<br/>2.000-18<br/>Barrel</b> |
| <b>Electrical connection</b>                    |              |                                   |
| Voltage   | V            | 18                                |
| Nominal power                                   | W            | 80                                |
| <b>Device performance data</b>                  |              |                                   |
| Maximum flow rate                               | l/h          | 2000                              |
| Pressure (max.)                                 | MPa<br>(bar) | 0,20<br>(2,0)                     |
| Delivery height (max.)                          | m            | 20                                |
| Particle size (max.) of permissible feed fluids | mm           | 0,5                               |
| <b>Dimensions and weights</b>                   |              |                                   |
| Weight (without accessories)                    | kg           | 1,1                               |

Subject to technical modifications.

**Pump characteristic curve**



The possible flow rate is further increased:

- The lower the suction and lifting heights are.
- The greater the diameter of the hoses used is.
- The shorter the hoses used.
- The smaller the pressure loss caused by the connected up accessories.

**EU Declaration of Conformity**

**EU Declaration of Conformity**

We hereby declare that the machine described below complies with the relevant basic safety and health requirements in the EU Directives, both in its basic design and construction as well as in the version placed in circulation by us. This declaration is invalidated by any changes made to the machine that are not approved by us.

Product: Pump battery

Type: BP 2.000-18

**Currently applicable EU Directives**

2014/35/EU

2014/30/EU

2011/65/EU

**Harmonised standards used**

EN 60335-1

EN 60335-2-41

EN 62233: 2008

EN 55014-1: 2017 + A11: 2020

EN 55014-2: 2015

EN IEC 63000: 2018

The signatories act on behalf of and with the authority of the company management.

H. Jenner

Chairman of the Board of Management

S. Reiser

Director Regulatory Affairs & Certification

Documentation supervisor:

S. Reiser

Alfred Kärcher SE & Co. KG

Alfred-Kärcher-Str. 28 - 40

71364 Winnenden (Germany)

Ph.: +49 7195 14-0

Fax: +49 7195 14-2212

Winnenden, 2022/01/01

**Declaration of Conformity (UK)**

We hereby declare that the product described below complies with the relevant provisions of the following UK Regulations, both in its basic design and construction as well as in the version put into circulation by us. This declaration shall cease to be valid if the product is modified without our prior approval.

Product: Pump battery

Type: BP 2.000-18

**Currently applicable UK Regulations**

S.I. 2016/1101 (as amended)

S.I. 2016/1091 (as amended)

S.I. 2012/3032 (as amended)

**Designated standards used**

EN 60335-1

EN 60335-2-41

EN 62233: 2008

EN 55014-1: 2017 + A11: 2020

EN 55014-2: 2015

EN IEC 63000: 2018

The signatories act on behalf of and with the authority of the company management.





**THANK YOU!**  
**MERCI! DANKE! ¡GRACIAS!**



Registrieren Sie Ihr Produkt und profitieren Sie von vielen Vorteilen.

Register your product and benefit from many advantages.

Enregistrez votre produit et bénéficiez de nombreux avantages.

Registre su producto y aproveche de muchas ventajas.

**[www.kaercher.com/welcome](http://www.kaercher.com/welcome)**



Bewerten Sie Ihr Produkt und sagen Sie uns Ihre Meinung.

Rate your product and tell us your opinion.

Évaluer votre produit et dites-nous votre opinion.

Reseñe su producto y díganos su opinión.



**[www.kaercher.com/dealersearch](http://www.kaercher.com/dealersearch)**

**Alfred Kärcher SE & Co. KG**  
Alfred-Kärcher-Str. 28-40  
71364 Winnenden (Germany)  
Tel.: +49 7195 14-0  
Fax: +49 7195 14-2212

